



VACUUM CLEANERS - WET & DRY - PREMIUM

GP 2/72 W&D GS 2/78 W&D

POWER MAX

2600 W

WATER LIFT

2380 mmH₂O

AIRFLOW

400 m³/h

TANK CAPACITY

72 l
78 l

EXCLUSIVE FEATURES

- ▶ AP TUBE
- ▶ SANIFILTER
- ▶ INNOVATIVE GASKET
- ▶ STRONG HOOKS
- ▶ INDEPENDENT MOTORS WITH LIGHT SWITCHES
- ▶ SEALANT FLOATER & INTEGRATED ANTIFOAM SYSTEM
- ▶ TIPPING TROLLEY
- ▶ RELIABLE CONSTRUCTION FOR INTENSIVE USE
- ▶ DETACHABLE TANK AND SOLID CART



MOST FREQUENTLY USE

AGRICULTURE



COSTRUCTION



HARDWARE CUSTOMER



HEAVY INDUSTRY



LOGISTIC & TRANSPORT



AUTOMOTIVE



INNOVATIONS



BLACK IS GREEN™



HIGH SPEED NEW GENERATION MOTORS

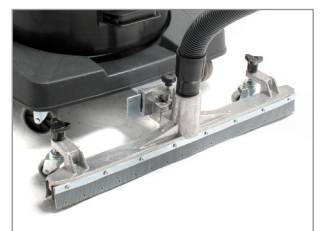
SPECS



TIPPING TANK



FLEXIBLE HOSE IS LOCKED SECURELY AND RELIABLY



OPTIONAL FIXED ACCESSORY

TECHNICAL DATA

		GP 2/72 W&D	GS 2/78 W&D
Code		ASD015240	ASD015513
PERFORMANCE			
Usage		WET&DRY	WET&DRY
Motor		2	2
Power	W	2200 - 2600 max	2200 - 2600 max
Voltage	V	220 - 240	220 - 240
Water lift	mmH ₂ O	2380	2380
Airflow	m ³ /h	400	400
Tank Capacity/Material	l	72/plastic	78/steel
Cable length	m	8,5	8,5
Sound Pressure Level (EN 60704-1; EN 60704-2-1; IEC 60335-2-69)	dB(A)	72	72
Diameter of accessories	mm	38	38
Dimensions (LxWxH)	mm	550x600x1030	550x600x980
Weight	Kg	21,0	22,0

STANDARD EQUIPMENT

CODE: TBFX00542
FLEXIBLE HOSE 2,5 m
Ø38 mm



CODE: LAFN43048 (FOR 1 PC)
ALUMINIUM/PLASTIC
TUBE 50 cm Ø38 mm
(MACHINE COMES WITH 2PCS)



CODE: MPVR43047
HANDLE WITH AIR
REGULATOR Ø38 mm



CODE: SPPV43050
DUST TOOL Ø38 mm



CODE: SPPV43051
WET TOOL Ø38 mm



CODE: SPPV00156
FLAT LANCE Ø38 mm



CODE: SPPV43052
ROUND BRUSH Ø38 mm



CODE: MPVR43049
ADAPTER



CODE: FTDP28733
FILTERING KIT
(FOR GP 2/72 W&D)



CODE: KTRI02949
FILTERING KIT
(FOR GS 2/78 W&D)



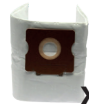
OPTIONAL ACCESSORIES

CODE: KTRI02912
PAPER BAG SET OF 10 PCS



X10

CODE: KTRI04796
MICROFIBER BAG SET OF
10 PCS



X10

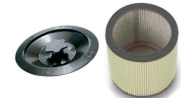
CODE: FTDP00223
PREFILTER PCB



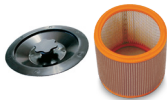
CODE: FTDP00659
PAPER CARTRIDGE KIT W/
RING AND GASKET



CODE: FTDP00654
WASHABLE CARTRIDGE
KIT W/RING AND GASKET



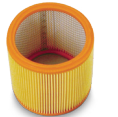
CODE: FTDP00657
HEPA CARTRIDGE KIT W/
RING AND GASKET



CODE: MPVR28723
FASTENING PLASTIC RING



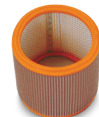
CODE: FTDP00528
PAPER CARTRIDGE
(AVAILABLE AS SPARE PART)



CODE: FTDP00583
WASHABLE CARTRIDGE
(AVAILABLE AS SPARE PART)



CODE: FTDP28844
HEPA CARTRIDGE
(AVAILABLE AS SPARE PART)



CODE: FTDP28755
MESH FILTER



CODE: SPPV01336
CARPET BRUSH Ø38 mm



CODE: SPPV28248
FIXED ACCESSORY FOR
LIQUID



CODE: SPPV28247
FIXED ACCESSORY FOR
DUST



CODE: SPPV30894
FIXED ACCESSORY FOR
DUST AND LIQUIDS



CODE: KTRI02735
CONDUCTIVE TOOL KIT
Ø38 mm
(FOR STEEL TANK MODEL)



CODE: SPPV37133
BRISTLE BRUSH Ø38 mm

