



VACUUM CLEANERS - WET & DRY - PREMIUM

# GP 3/72 W&D GS 3/78 W&D

POWER MAX	WATER LIFT	AIRFLOW	TANK CAPACITY
3600 W	2380 mmH <sub>2</sub> O	600 m <sup>3</sup> /h	72 l 78 l



## EXCLUSIVE FEATURES

- ▶ AP TUBE
- ▶ SANIFILTER
- ▶ INNOVATIVE GASKET
- ▶ STRONG HOOKS
- ▶ INDEPENDENT MOTORS WITH LIGHT SWITCHES
- ▶ SEALANT FLOATER & INTEGRATED ANTIFOAM SYSTEM
- ▶ TIPPING TROLLEY
- ▶ RELIABLE CONSTRUCTION FOR INTENSIVE USE
- ▶ DETACHABLE TANK AND SOLID CART

## MOST FREQUENTLY USE



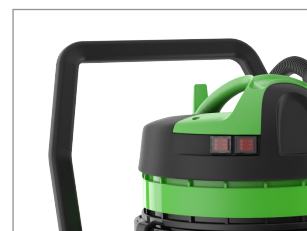
## INNOVATIONS



## SPECS



TIPPING TANK



TROLLEY WITH HANDLE



LIGHT SWITCHES

## TECHNICAL DATA

		GP 3/72 W&D	GS 3/78 W&D
Code		ASD015029	ASD015044
PERFORMANCE			
Usage		WET&DRY	WET&DRY
Motor		3	3
Power	W	3300 - 3600 max	3300 - 3600 max
Voltage	V	220 - 240	220 - 240
Water lift	mmH <sub>2</sub> O	2380	2380
Airflow	m <sup>3</sup> /h	600	600
Tank Capacity/Material	l	72/plastic	78/steel
Cable length	m	8,5	8,5
Sound Pressure Level (EN 60704-1; EN 60704-2-1; IEC 60335-2-69)	dB(A)	74	74
Diameter of accessories	mm	38	38
Dimensions (LxWxH)	mm	550x600x1030	550x600x980
Weight	Kg	23,0	24,0

## STANDARD EQUIPMENT

CODE: TBFX00542  
FLEXIBLE HOSE 2,5 m  
Ø38 mm



CODE: LAFN43048 (FOR 1 PC)  
ALUMINIUM/PLASTIC  
TUBE 50 cm Ø38 mm  
(MACHINE COMES WITH 2PCS)



CODE: MPVR43047  
HANDLE WITH AIR  
REGULATOR Ø38 mm



CODE: SPPV43050  
DUST TOOL Ø38 mm



CODE: SPPV43051  
WET TOOL Ø38 mm



CODE: SPPV00156  
FLAT LANCE Ø38 mm



CODE: SPPV43052  
ROUND BRUSH Ø38 mm



CODE: MPVR43049  
ADAPTER



CODE: FTDP28733  
FILTERING KIT  
(FOR GP 3/72 W&D)



CODE: KTRI02949  
FILTERING KIT  
(FOR GS 3/78 W&D)

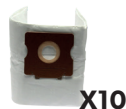


## OPTIONAL ACCESSORIES

CODE: KTRI02912  
PAPER BAG SET OF 10 PCS



CODE: KTRI04796  
MICROFIBER BAG SET  
OF 10 PCS



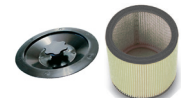
CODE: FTDP00223  
PREFILTER PCB



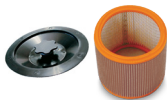
CODE: FTDP00659  
PAPER CARTRIDGE KIT W/  
RING AND GASKET



CODE: FTDP00654  
WASHABLE CARTRIDGE  
KIT W/RING AND GASKET



CODE: FTDP00657  
HEPA CARTRIDGE KIT W/  
RING AND GASKET



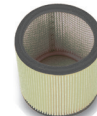
CODE: MPVR28723  
FASTENING PLASTIC RING



CODE: FTDP00528  
PAPER CARTRIDGE  
(AVAILABLE AS SPARE PART)



CODE: FTDP00583  
WASHABLE CARTRIDGE  
(AVAILABLE AS SPARE PART)



CODE: FTDP28844  
HEPA CARTRIDGE  
(AVAILABLE AS SPARE PART)



CODE: FTDP28755  
MESH FILTER



CODE: SPPV01336  
CARPET BRUSH Ø38 mm



CODE: SPPV28248  
FIXED ACCESSORY FOR  
LIQUID



CODE: SPPV28247  
FIXED ACCESSORY FOR  
DUST



CODE: SPPV30894  
FIXED ACCESSORY FOR  
DUST AND LIQUIDS



CODE: KTRI02735  
CONDUCTIVE TOOL KIT  
Ø38 mm  
(FOR STEEL TANK MODEL)



CODE: SPPV37133  
BRISTLE BRUSH Ø38 mm

